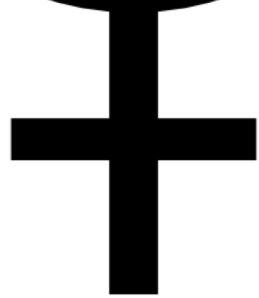
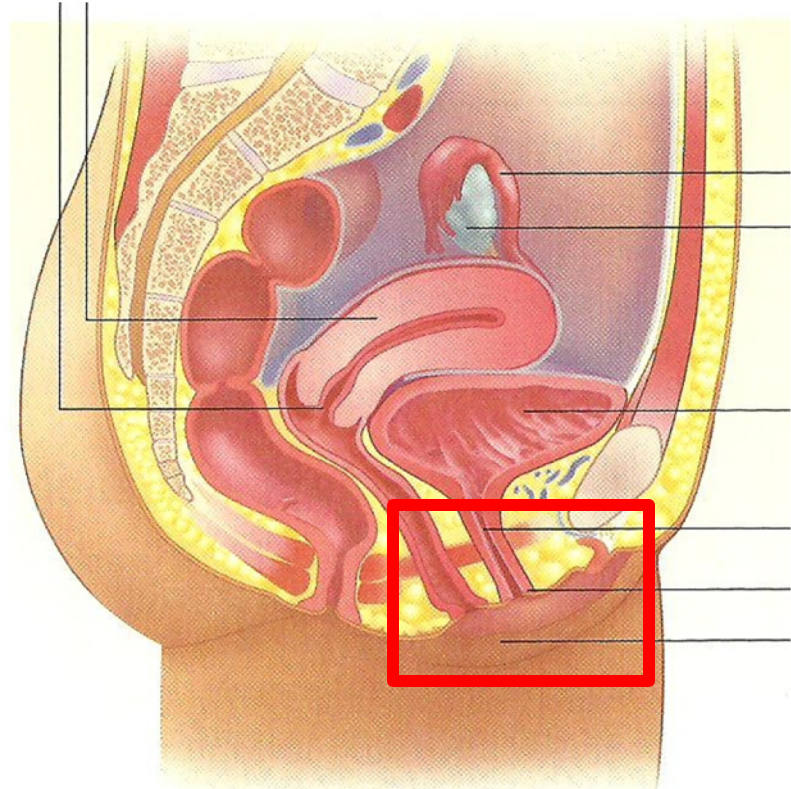


THE **FEMALE** REPRODUCTIVE SYSTEM



EXTERNAL REPRODUCTIVE ORGANS

- Labia majora
- Labia minora
- Clitoris



Labia Majora & Labia Minora

LOCATION: skin that surround the vaginal and urethral openings

FUNCTION: Serve as protection against pathogens entering the body and functions in sexual arousal

Labia Majora

“Outer lips”

Provides moisture and
lubrication

Labia Minora

“Inner Lips”

Contain oil glands and blood vessels

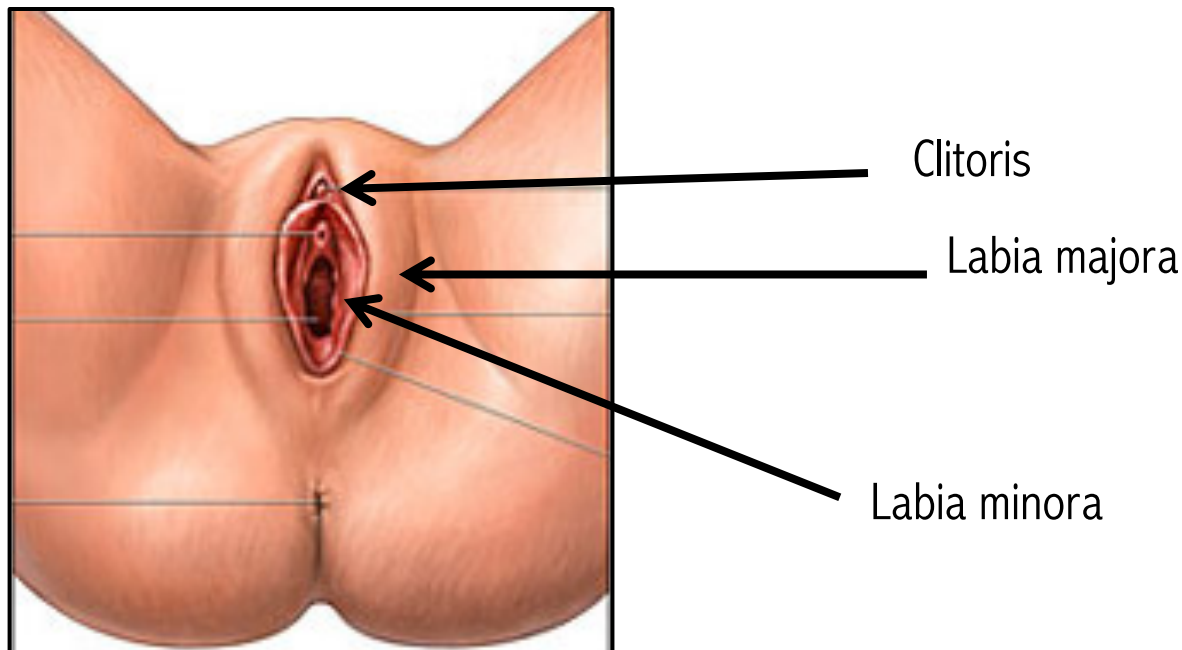
Highly sensitive

Clitoris

LOCATION: sensitive organ; near the pubic bone and labia minora and majora

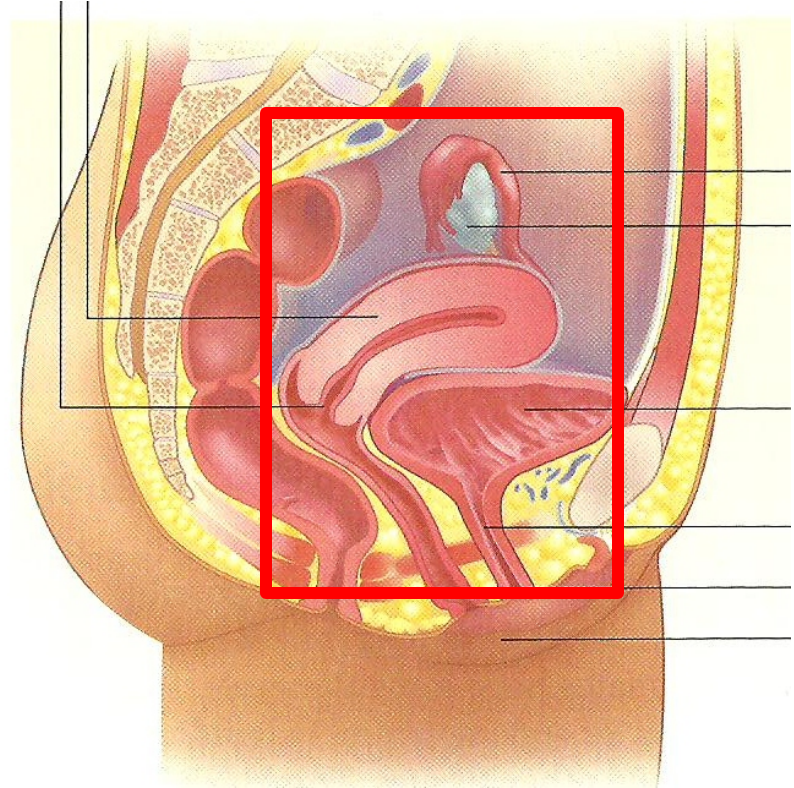
FUNCTION: Plays a role in female sexual arousal

- Enlarges during sexual arousal



INTERNAL REPRODUCTIVE ORGANS

- Vagina
- Uterus
- Cervix
- Fallopian tubes
- Ovaries
- Urethra



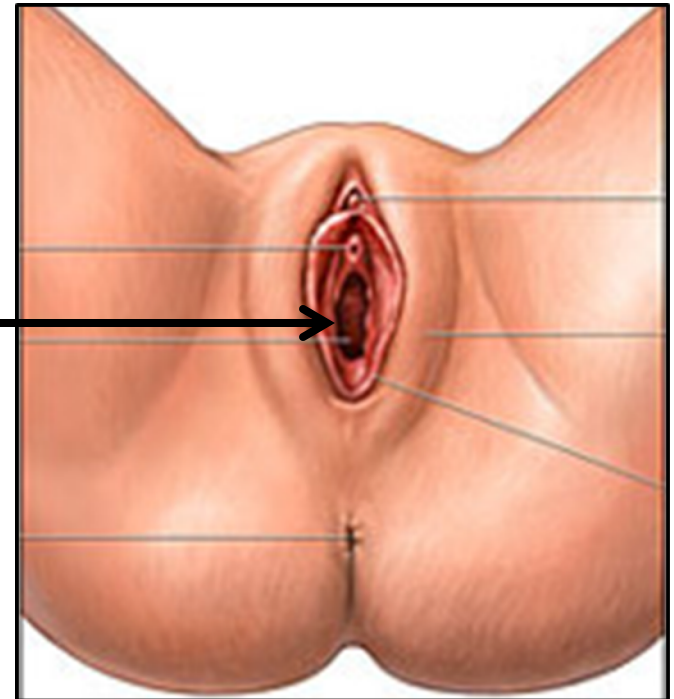
vagina

LOCATION: Elastic, muscle-lined tube (3-4 inches); extends from the uterus to the outside of the body

FUNCTION: Allows passage of baby (known as birth canal)

- Sexual intercourse occurs here
- Passageway for cervical mucous and menstrual fluid

Vaginal Opening

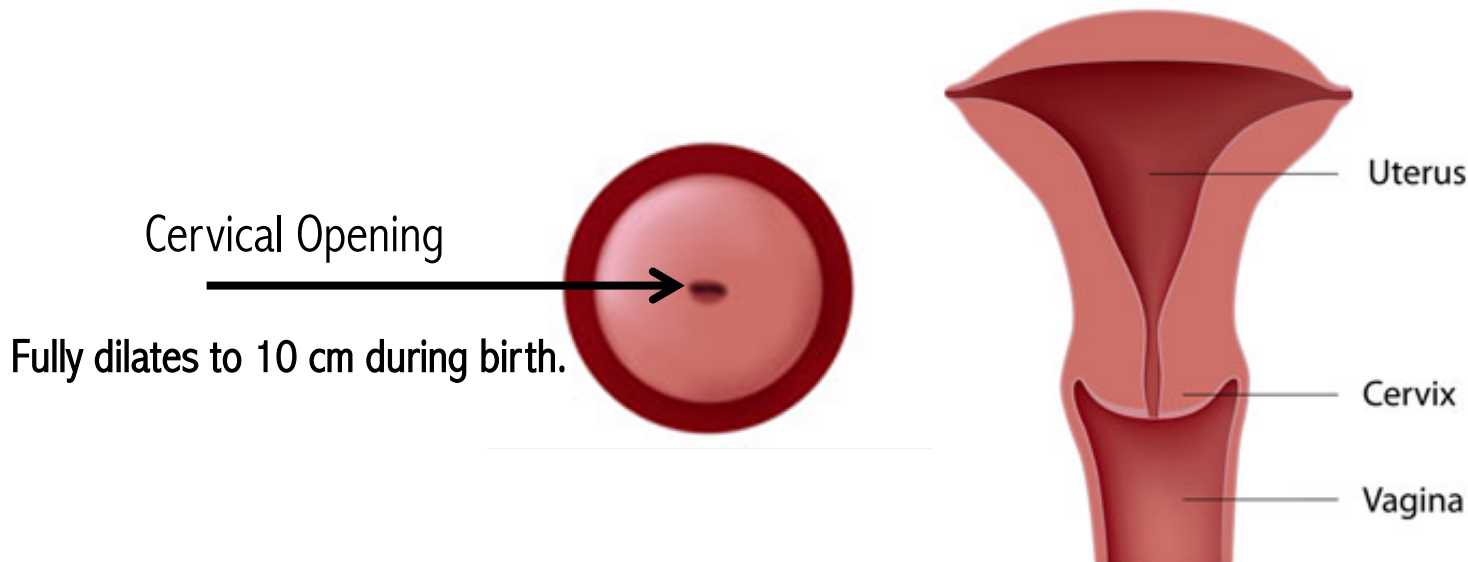


cervix

LOCATION: lower portion of the uterus (opening to)

FUNCTION: Widens to allow passage of baby, during birth

- Secretes mucus to lubricate the vagina
- Allows flow of menstrual blood from uterus

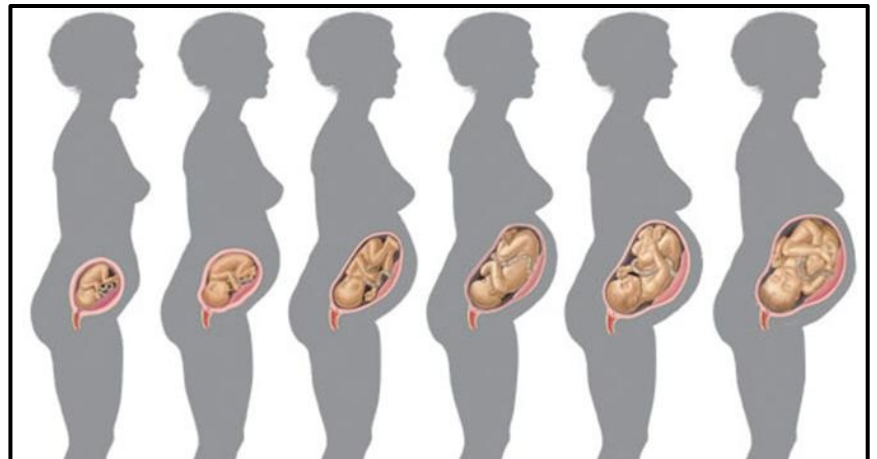
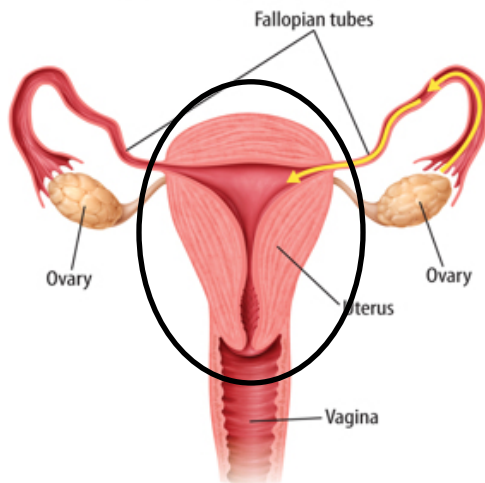


uterus

LOCATION: hallow, muscular, pear-sized structure found within the pelvis; connected to the vagina and fallopian tubes

FUNCTION: protects and nourishes the fertilized egg during pregnancy

- Fertilized egg attaches to uterine wall (implantation)
- Expands throughout pregnancy to hold growing fetus

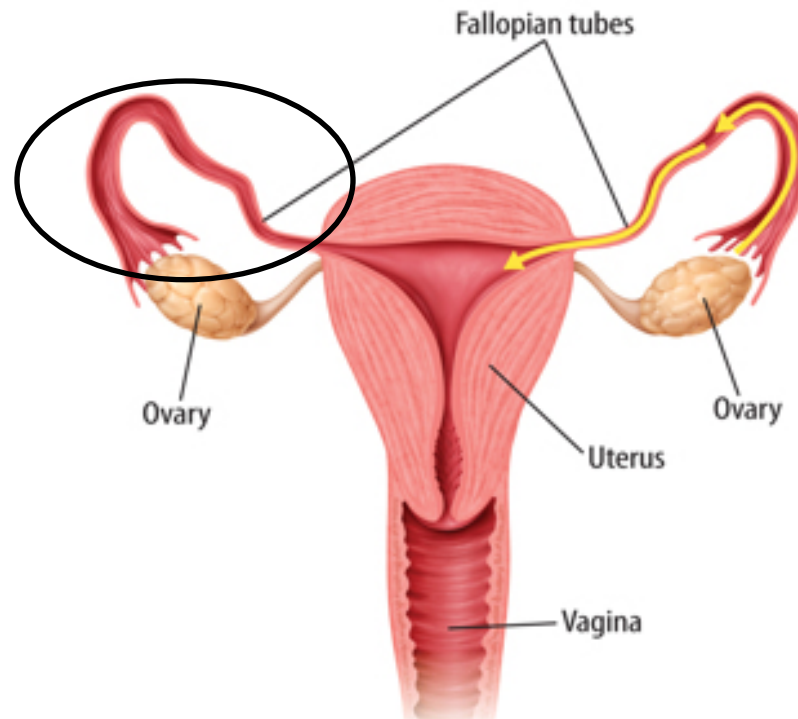


Fallopian Tubes

LOCATION: connected on either side of the uterus

FUNCTION: tube where eggs travel from the ovaries to the uterus

- Fertilization of the egg occurs in the widest part of the tube

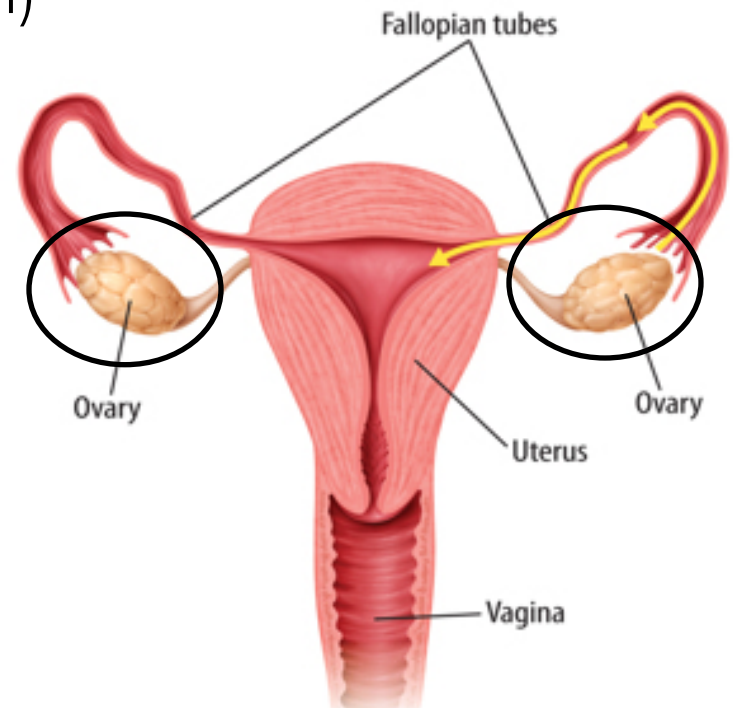


ovaries

LOCATION: oval shaped structure found at ends of the fallopian tubes; on either side of the uterus

FUNCTION: Female sex gland:

- Produce and release egg cells (ovum)
- Female hormones (estrogen)



urethra

LOCATION: above the vaginal opening, where the labia minora come together

FUNCTION: carries urine from the bladder out of the body

Urethral Opening

